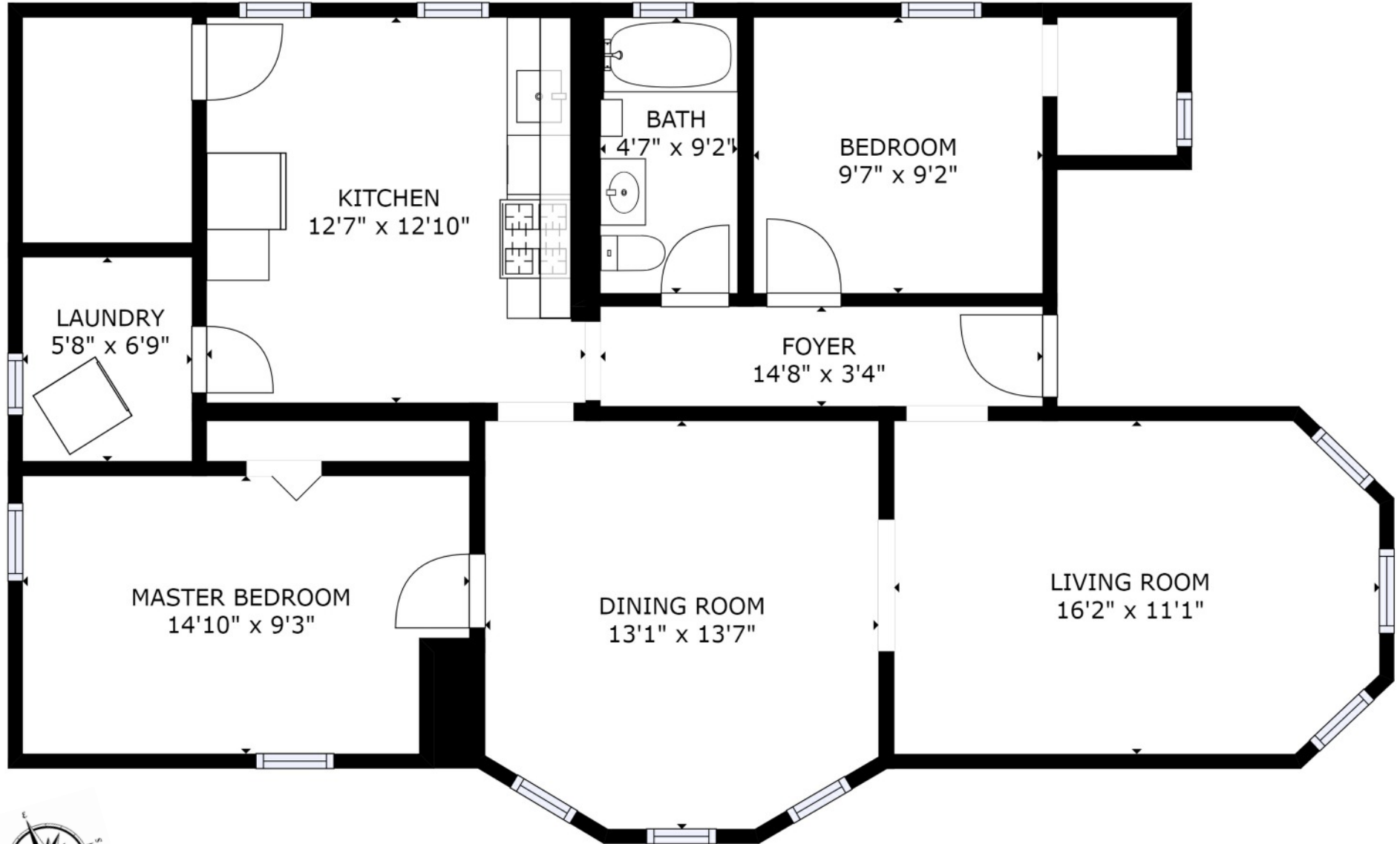


# 19 Roseland Street #2, Dorchester MA



Unlimited | Sotheby's  
INTERNATIONAL REALTY

Trisha Solio  
617-293-8070

This Floor Plan is an artistic rendering for visual purposes only. It is intended only for marketing purposes. All measurements and annotations are approximate and not drawn to exact scale. Subject to errors and/or omissions.  
Copyright © 2021 by HomeListingPhotography.com 508-655-2225